

## LED 移动摄影箱



## 使用说明书

## 产品概述

新型LED移动摄影箱，采用高质量LED贴片灯珠，亮度高、色温准、高显色性（93%）。且外观精致、轻便耐用，操作简便。精心设计的灯光布局，使光线均匀、柔和、无阴影，免去了布光的操作，拍摄更简便，大大节省了布光和后期处理时间。适合拍摄各种电子产品、首饰、珠宝以及精致的小物件。

## 技术参数

型号	LED-L1	LED-L2
输出功率	20W	30W
输入电压	DC24V	
CRI	≥93%	
色温	5500K±200K	
功率调节	无级调光	
柔光片	有	
背景布	红、蓝、黑、白	

## 温馨提示：

1. 使用本产品前，请仔细阅读本说明书。
2. 本公司产品不断升级、更新，技术参数和功能等仅作参考，如有变更恕不另行通知。
3. 图片和实物有细微差别，均以实物为准，我司保留最终解释权，谢谢合作。

## 使用方法



1. 把摄影箱水平放置在台面上，打开铝箱侧面的锁扣，打开箱盖。



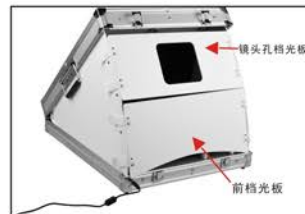
2. 装上左右扇形板，注意方向。



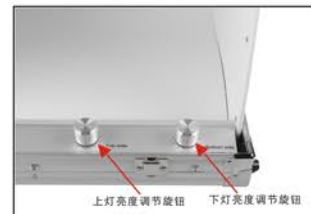
3. 根据拍摄需要选择背景布



4. 连接好电源线



5. 把要拍摄的产品放进铝箱，然后把前挡板粘上，并根据所要的产品视角图来调整带镜头孔的挡光板的位置。



7. 可根据实际需要，分别调整上下两灯的光亮。

## 注意事项

※ 维护保养本产品时，务必先断开电源（电源线拔离插座）。

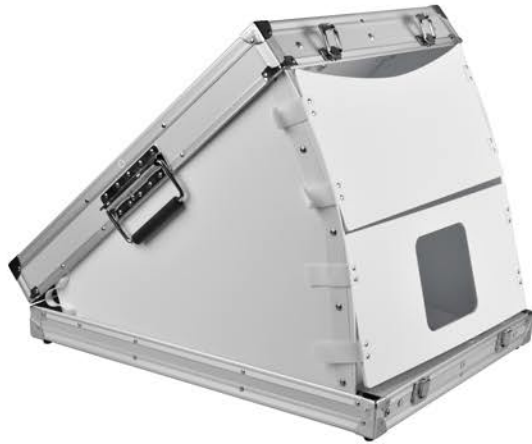
1. 保持本机于干燥通风处，请勿在潮湿环境下使用；
2. 如遇到产品故障问题，请专业人士协助维修；
3. 调试、使用本机时，请勿长时间直视光源，以免损伤眼睛；
4. 请勿让儿童使用和玩耍本产品；
5. 长时间使用，LED灯板会有发热现象，属于正常现象。
6. 为保证产品使用寿命，建议每使用4小时休息30分钟。

## 配置清单



- ① 摄影箱（含白色背景板）=1个
- ② 扇形板=2块
- ③ 半月形前挡光板=1块
- ④ 电源适配器=1个
- ⑤ 电源线1.2m=1条
- ⑥ 镜头孔挡光板=1块
- ⑦ 四色背景布（红/蓝/黑/白）=1套

# LED Portable Light Box



## Instruction Manual

### Introduction

The new LED portable light box adopts high quality LED SMT beads, high brightness, stable color temperature and high CRI (93%). And the exterior is exquisite, light and firm, easy to operate. The elaborate lighting design make the light even, soft, and no shadow, spare you complex lighting, which make photography more simple, save your time of later processing. It fits for shooting various electronic products, jewelry, and fine small items.

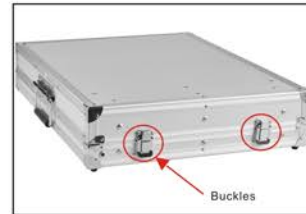
### Specifications

Model	LED-L1	LED-L2
Output Power	20W	30W
Power voltage	DC24V	
CRI	≥93%	
Color Temp.	5500K±200K	
Power variation	Stepless adjustment	
Diffuser	Have	
Backdrop	Red/Blue/Black/White	

#### Warm Tips:

1. Please read the manual carefully before using.
2. For the products will be updated, the technical data and features are just for reference. There will be no notice if change, please note.
3. There maybe some differences between the pictures and the product, please prevail in kind. We reserve the right to interpret.

### Use Method



1. Put the light box on the desk, then unlock the buckles on the front side, and open the light box.



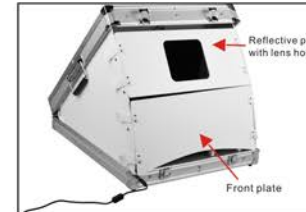
2. Install the left and right sector plate, pay attention to the direction.



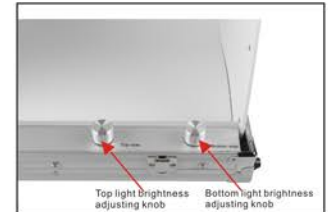
3. Choose the backdrop according to your requirement.



4. Connect the power cable.



13. Put the object into the light box, then fix the front plate and adjust the position of the reflective plate with lens hole according to visual senses of product photos required.



15. Adjust the brightness of the top light and bottom light according to requirement.

### Warning

**\*MUST power off before maintenance (disconnect the power cable).**

1. Keep in dry ventilated place, don't use in wet environment.
2. When any fault happen, please ask for help from professional person.
3. Don't stare at the light for long time when installing, testing or using this product, avoid damaging your eyes.
4. Don't let children play with the product.
5. It is normal if the light become hot after long time use.
6. In order to ensure the service life of the light box, it is recommend to rest 30mins after 4 hours use.

### Packing List



- ①. Light box (with white background plate)=1pc
- ②. Sector plate = 2pcs
- ③. Front plate = 1pc
- ④. Power adapter = 1pc
- ⑤. Power cable 1.2m = 1pc
- ⑥. Reflective plate with lens hole = 1pc
- ⑦. 4 colors backdrop (red/blue/black/white) = 1set.